

# College to Career

## Information *Night*

Join us to learn about the C2C program and apply for the Fall 2016 semester.

The C2C program serves students with disabilities.

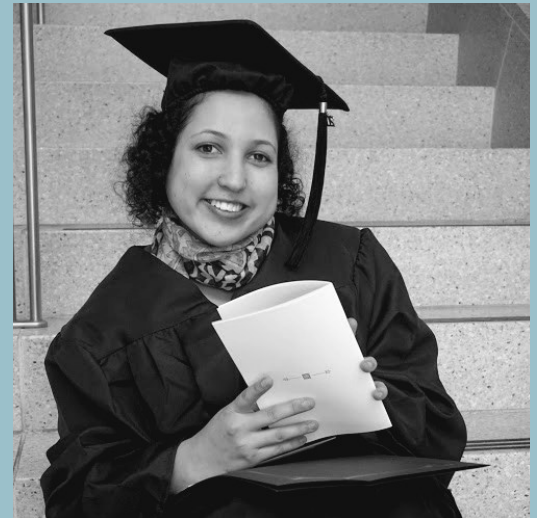
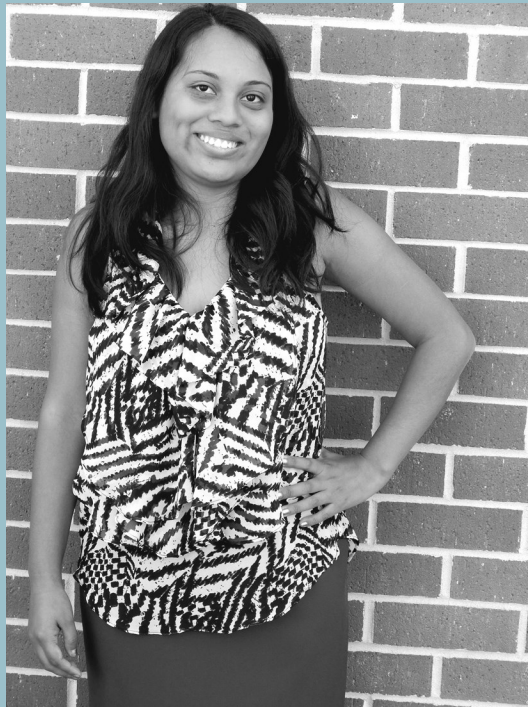
Support providers encouraged to attend.

For more information:

**(707) 522.2807**

[sarciero@santarosa.edu](mailto:sarciero@santarosa.edu)

[www.santarosa.edu/c2c](http://www.santarosa.edu/c2c)



### January 27, 2016

5:30 pm - 7:30 pm

Bertolini Student Activities Center

SRJC - Santa Rosa Campus



**SANTA ROSA  
JUNIOR COLLEGE**

The Sonoma County Junior College District does not discriminate on the basis of race, religious creed, color, national origin, ancestry, ethnic group identification, physical disability, mental disability, medical condition, genetic condition, marital status, sex, gender, gender identity, gender expression, genetic information or sexual orientation in any of its policies, procedures or practices; nor does the District discriminate against any employees or applicants for employment on the basis of their age. This non-discrimination policy covers admission, access and treatment in District programs and activities—including but not limited to academic admissions, financial aid, educational services and athletics—and application for District employment.